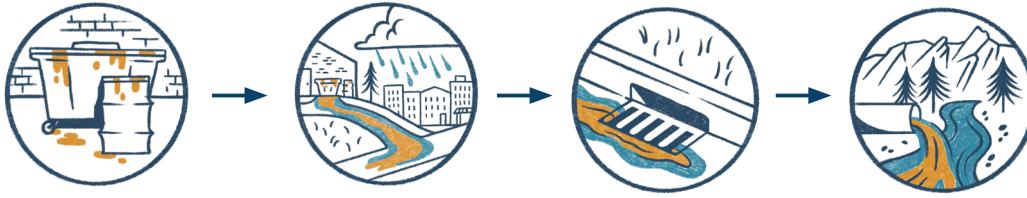




Stormwater Protection | Carpet Cleaning

When stormwater flows across parking lots and streets, it picks up pollutants and enters storm drains on streets and in parking lots. Pollutants entering these drains flow untreated to local waterways. Wastewater from carpet cleaning can contaminate stormwater runoff with carpet fibers, dirt, soap, oil, grease, solvents, and other toxic chemicals.



Outdoor Material Storage and Handling



- Cover materials stored outside.
- Provide secondary containment for chemicals stored in containers 55 gallons or larger.
- Take precautions and protect storm drains when using or storing chemicals or cleaning products.

Wastewater and Chemical Disposal

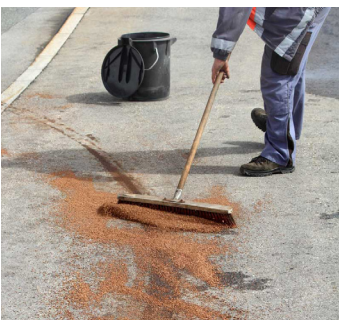


- Wash water must be collected and disposed of properly following local sanitary sewer requirements. It may be disposed of into a sanitary sewer drain at the job site (with permission) or at the contractor's place of business.
- The fibers and other debris in the wastewater can clog pipes and must be filtered out using an inline filter or drain screen and disposed of as waste.
- Cleaning products that are expired or unneeded should be disposed of at the Hazardous Materials Management Facility (HMMF). Never discharge wastewater, wash water, or chemicals to streets or storm drains.



Learn more about the HMMF at:
boco.org/hmmf

Spills and Leaks



- Maintain cleaning equipment (tanks, hoses, and fittings) to prevent wastewater leaks.
- Securely store all materials and equipment in vehicles during transport.
- Use dry cleanup methods (sweeping, absorbents) to clean up spills immediately.
- If a spill reaches the storm drain system, notify your municipality. Find contact information at:

www.keepitcleanpartnership.org/report